



October 2021

# Student Voting Rates for University Of Iowa

## 2020 NSLVE Campus Report

**October 2021**

**Dear Colleagues:**

We are pleased to send this tailored report containing your students' voting rates for 2020. This report contains three years of relevant topline data: 2016, 2018, and 2020. As always, we disaggregate the data so you can better identify and address gaps in participation.

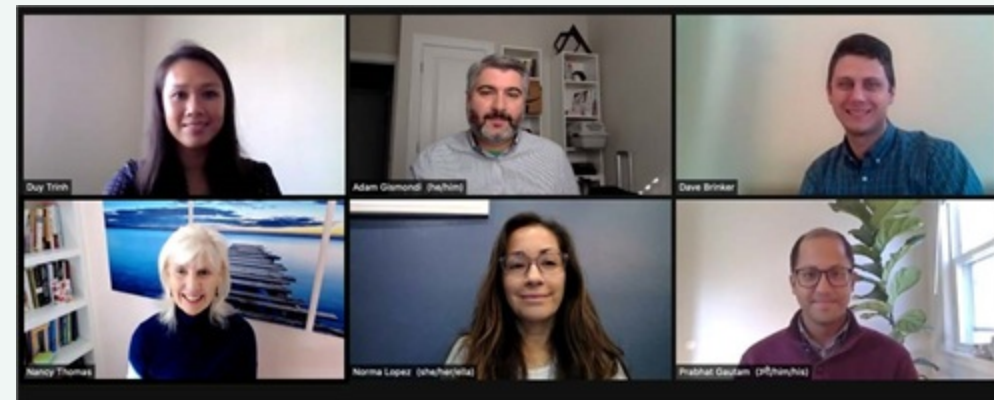
College and university students participated in record-breaking numbers in the 2020 election. In 2016, the Average Institutional Voting Rate was 53%. This year, it jumped to 66%. We encourage you to review Democracy Counts 2020, our most recent national report.

As in past years, we urge you to share this report widely and strategically, particularly with faculty who, in 2020, were often the most consistent communicators with students about ever-changing voting conditions and deadlines. We also urge you to review our recommendations for engaging elections to cultivate a robust and healthy campus climate for political engagement, discourse, equity, and participation: Election Imperatives (2019) and the more recent Election Imperatives: A Time of Physical Distancing and Social Action. Since "pervasive political discussions" and attentiveness to the campus culture around speech and academic freedom are among our top recommendations, we direct you to our discussion guides on talking about your NSLVE report, on free speech and inclusion, and on hot topics, our Making Sense of ... guides.

Finally, we always encourage you to work with us. Help us help you get better data by reaching out. Email [IDHE@Tufts.edu](mailto:IDHE@Tufts.edu) for more information. And as always, watch your inbox for our periodic newsletter, IDHE Update, for announcements about upcoming releases and new resources.

Congratulations on engaging your students in the 2020 election. Remember, student political learning is a year-round objective. Elections may be episodic, but student political engagement should not be.

All the Best,  
IDHE Team



**(Top Row from left) Duy Trinh, Program Administrator; Adam Gismondi, Director of Impact; Dave Brinker, Senior Researcher; (Bottom Row from left) Nancy Thomas, Director; Norma López, Postdoctoral Scholar; Prabhat Gautam, Data Manager.**

We also want to acknowledge and thank **Syed Golam Mohaimen, M.S. student in Data Science at Tufts University** for his contributions toward the creation of these reports.

# In This Report

This report presents data on student voter participation rates for your campus. The topline counts on page 5 tells you how many students voted, but we encourage you to look carefully at the data on subsequent pages to learn who voted. Data are presented in the form of vessel charts, overlapping donut charts, and tables.

	2014			2018			2014-2018 Change (p.p.)
	Enrolled	Voted	Rate (%)	Enrolled	Voted	Rate (%)	
Asian	-	-	-	-	-	-	-
American Indian/ Alaska Native	-	-	-	-	-	-	-
Black	-	-	-	-	-	-	-
Hispanic	-	-	-	-	-	-	-

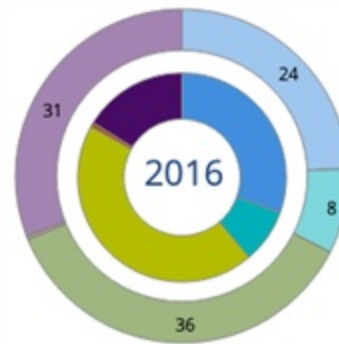
## Tables

The tables show, on the left-side columns, the numbers of students and the rates from 2016, 2018, and 2020. On the left-side, percentage point (p.p.) changes between 2016 and 2020. A red down arrow indicates a decrease, a green up arrow indicates an increase, and a yellow arrow pointing to the right indicates no change. "-" in these tables indicates that the data is unavailable/missing, or is available for 10 or less students.



## Vessel Chart

This chart shows rates out of 100%, with arrows to the right of each bar representing relevant national averages (medians), which you can find in IDHE's national report Democracy Counts 2020.



## Overlapping Donut Chart

This chart is used to show the breakdown of vote method utilization (page 10), with the outer ring showing your campus method utilization and the inner ring showing the national breakdown. These are described in percentages.

# Voting, Registration and Yield Rates

## YOUR INSTITUTION

67.4%

2020 Voting Rate

+4.2

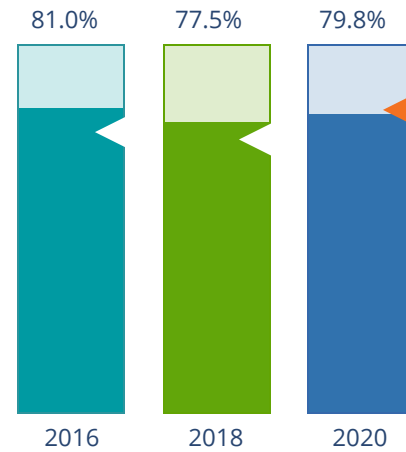
Change From 2016

## ALL INSTITUTIONS

66%

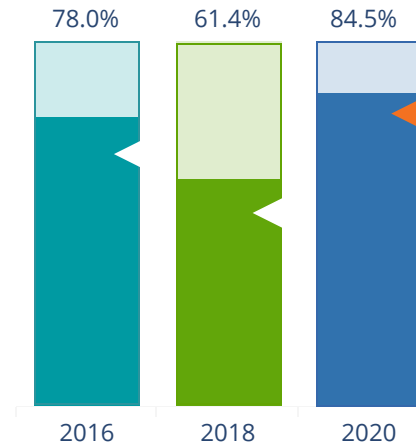
2020 Voting Rate

## REGISTRATION RATE



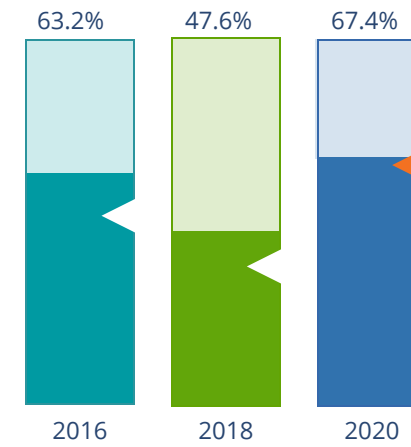
The **Registration Rate** is the percent of your voting-eligible students who registered to vote.

## VOTING RATE OF REGISTERED STUDENTS



The **Voting Rate of Registered Students** is the percent of registered students who voted on Election Day. We often refer to this as the “yield” rate.

## VOTING RATE



The **Voting Rate** is the percentage of eligible students who voted on Election Day. The voting rate is also the product of the registration and yield rates.

# Looking Closer

## Voting and Registration Rates

	2016	2018	2020	2016-2020 Change (p.p.)
<b>Total Student Enrollment</b>	30,952	31,376	30,120	↓ -832
(Age under 18/Unknown)	-	-	-	-
(IPEDS estimated non-resident aliens)	3,315	2,585	1,685	↓ -1,630
(FERPA records blocked)	2,644	2,333	1,638	↓ -1,006
(Non-Degree Seeking Students)	-	-	-	-
<b>Total eligible voters</b>	24,983	26,455	26,796	↑ 1,813
<b>Number of students who registered</b>	20,234	20,511	21,380	↑ 1,146
<b>Number of students who voted</b>	15,788	12,602	18,058	↑ 2,270
<b>Registration Rate %</b>	81	78	80	↓ -1
<b>Voting Rate of Registered Students %</b>	78	61	84	↑ 6
<b>Voting Rate %</b>	63	48	67	↑ 4

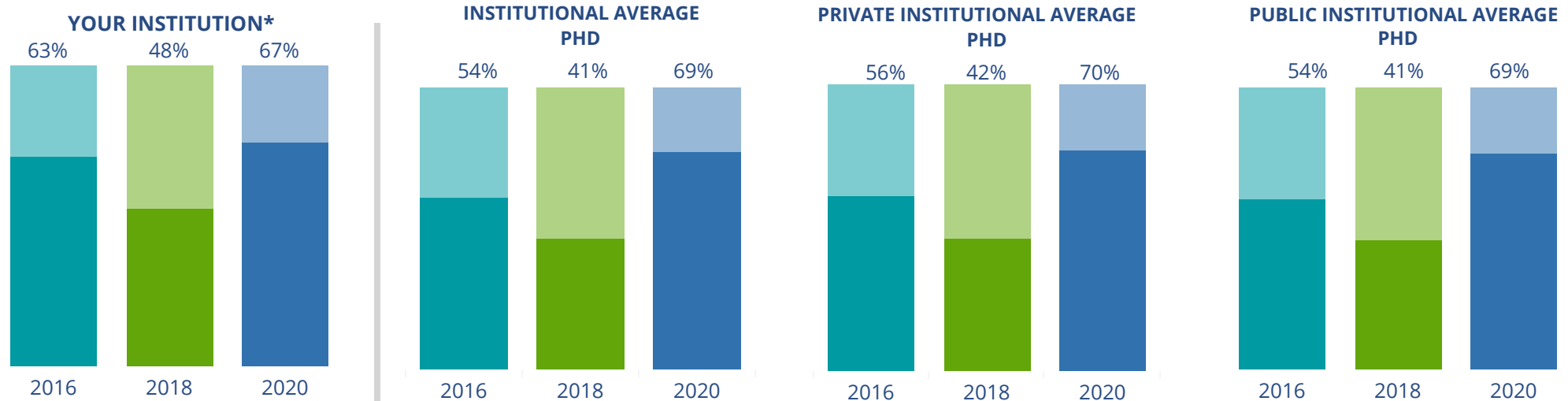
**This page provides the numbers we used to calculate your voting, registration, and yield rates.** The sub-categories under total student enrollment are the adjustments that we make to account for students who are ineligible to vote due to age or citizenship status. We also exclude, when correctly flagged, students who are not pursuing degrees.

We use IPEDS-derived estimates of NRAs when institutions do not submit non-resident alien status data to NSC, or we cannot verify the accuracy of the reported counts. This estimate is given by "IPEDS estimated non-resident aliens" on this page. If you believe the number of international students reported on this report is incorrect, you can manually adjust your institution's voting rates by using our recalculation tool. <https://id-he.tufts.edu/nslve/nslve-recalculation-tool>.

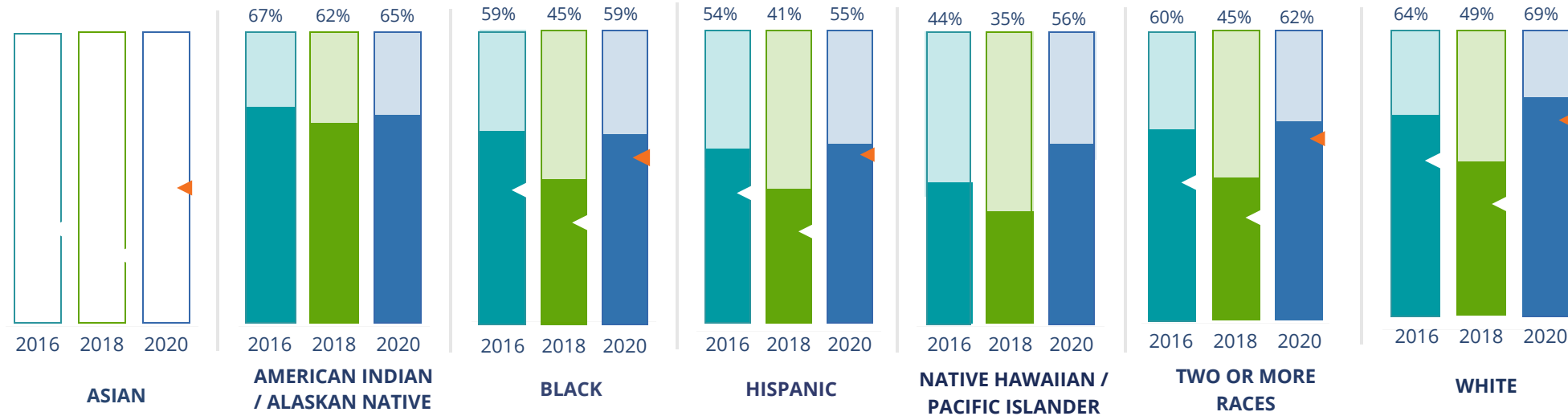
## By Institution Types



These are estimated voting rates of your institution compared to the average voting rates of similar institutions in NSLVE. \*"Your Institution" chart is presented at a different scale.



## By Race / Ethnicity



**These are estimated voting rates for race / ethnicity groups.** These classifications are provided by campuses and are obtained following race reporting procedures\* defined by the National Center for Education Statistics of the Institute of Education Sciences (IES). Please see our FAQ for more detail on why we cannot report national benchmark for some of the demographic groups:

<https://tufts.app.box.com/v/idhe-nslve-report-faq>

If you notice unavailable/missing data in this page, it could mean any of the following for your institution: (i) does not report this data; (ii) did not provide this data in past years; (iii) does not separately submit data for one or more of the demographic groups, or (iv) the data is reported for 10 or fewer students.

\* <https://nces.ed.gov/ipeds/report-your-data/race-ethnicity-collecting-data-for-reporting-purposes>

# Looking Closer

## By Race/Ethnicity

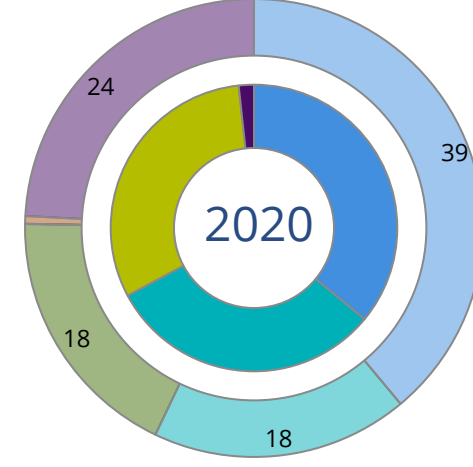
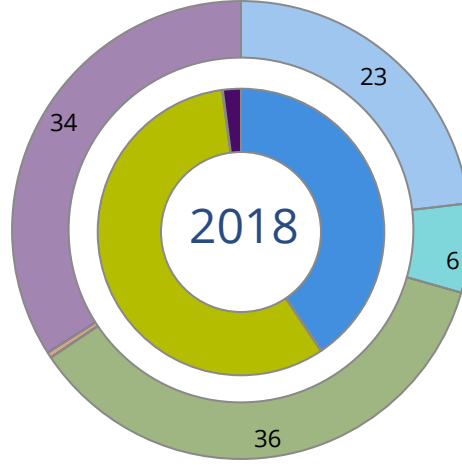
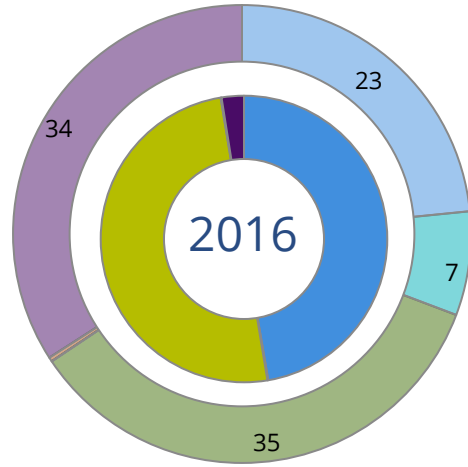
**This page provides the numbers we used to calculate race / ethnicity group voting rates.** We include the counts of students and the change in rates between the two most recent comparable election years. If you notice unavailable/missing data in this page, it could mean any of the following for your institution: (i) does not report this data; (ii) did not provide this data in past years; (iii) does not separately submit data for one or more of the demographic groups, or (iv) the data is reported for 10 or fewer students.

	2016			2018			2020			2016-2020 Change (p.p)
	Enrolled	Voted	Rate	Enrolled	Voted	Rate	Enrolled	Voted	Rate	
<b>Asian</b>	-	-	-	-	-	-	-	-	-	-
<b>American Indian/ Alaska Native</b>	49	33	67	50	31	62	48	31	65	↓ -3
<b>Black</b>	893	530	59	863	387	45	868	510	59	↓ -1
<b>Hispanic</b>	834	450	54	817	338	41	830	458	55	↑ 1
<b>Native Hawaiian/ Pacific Islander</b>	1,305	575	44	1,419	496	35	1,403	791	56	↑ 12
<b>2 or More Races</b>	1,869	1,122	60	2,147	959	45	2,355	1,469	62	↑ 2
<b>White</b>	19,566	12,471	64	20,722	10,046	48	20,701	14,314	69	↑ 5
<b>Race Unknown</b>	3,684	607	16	2,984	345	12	2,268	485	21	↑ 5



# By Voting Method

■ Not-In-Person 
 ■ Early Vote 
 ■ In-Person 
 ■ Other 
 ■ Provisional 
 ■ Unknown



	2016		2018		2020		2016-2020	
	Voted	Rate	Voted	Rate	Voted	Rate	Change (p.p.)	
<b>Early Vote</b>	21	0	18	0	5,643	31	31	↑
<b>In-Person on Election Day</b>	7,899	50	7,222	57	5,615	31	-19	↓
<b>Not-In-Person</b>	7,467	47	5,098	41	6,500	36	-11	↓
<b>Other</b>	-	-	-	-	-	-	-	
<b>Provisional</b>	20	0	-	-	-	-	-	
<b>Voting Method Unknown</b>	381	3	254	2	296	2	-1	↓

**These are estimated rates for vote method utilization, the number of students utilizing each method, and the percent of students utilizing each method.** Not all U.S. states provide information on vote method; voting method for voter files from these states are classified "Voting Method Unknown." For a list of these states, see our FAQ. <https://idhe.tufts.edu/nslve/nslve-faq#CampusReports>

## By Age Group

	2016	2018	2020
18-21	54%	40%	62%
22-24	54%	42%	65%
25-29	58%	49%	64%
30-39	64%	57%	64%
40-49	74%	68%	75%
50+	83%	82%	86%

**Voting is habit-forming and young voters will usually continue as voters in subsequent elections.**

Also, young voters are more likely to be contacted by campaigns and are visible, and therefore significant, to elected officials. While in the past, we have seen voting rates increase across age groups, in recent cycles, the most significant increases have been among first-time and the youngest voters. Some colleges serve primarily young students, traditionally viewed as students in the 18-21 or 22-24 categories here. Others have much higher numbers of enrolled older undergraduate or graduate students.

# Looking Closer

## By Age Group

**Here, we provide the numbers of students in each age category and the voting rates for each group.** These are based on the student's age on the day of the election, as calculated by the National Student Clearinghouse using data from student enrollment records.

	2016			2018			2020			2016-2020	
	Enrolled	Voted	Rate	Enrolled	Voted	Rate	Enrolled	Voted	Rate	Change (p.p)	
<b>18-21</b>	17,182	9,330	54	17,781	7,086	40	16,877	10,455	62	↑ 8	
<b>22-24</b>	5,076	2,732	54	5,364	2,268	42	5,650	3,665	65	↑ 11	
<b>25-29</b>	3,118	1,824	58	2,987	1,468	49	3,103	1,998	64	↑ 6	
<b>30-39</b>	2,019	1,284	64	2,001	1,147	57	1,951	1,247	64	↑ 0	
<b>40-49</b>	563	418	74	595	407	68	641	478	75	↑ 0	
<b>50+</b>	242	200	83	274	226	82	251	215	86	↑ 3	

# Looking Closer

## By Sex

	2016			2018			2020			2016-2020	
	Enrolled	Voted	Rate	Enrolled	Voted	Rate	Enrolled	Voted	Rate	Change (p.p)	
<b>Female</b>	14,605	8,841	61	15,285	7,168	47	15,386	10,161	66	↑	6
<b>Male</b>	13,532	6,903	51	13,661	5,398	40	13,022	7,848	60	↑	9

**These are estimated voting rates for sex groups and the numbers we used to calculate their voting rates.** These classifications are provided by campuses and are obtained following the reporting procedures defined by the National Center for Education Statistics (NCES) of the Institute of Education Sciences (IES). Presently, NCES requires institutions to report students as “Male” or “Female” only.\*

If you notice missing data in this page, it could mean any of the following for your institution: (i) does not report this data; (ii) did not provide this data in past years; (iii) does not separately submit data for one or more of the demographic groups, or (iv) the data is reported for 10 or fewer students.

\*<https://surveys.nces.ed.gov/ipeds/public/survey-materials/faq?faqid=11>

# Looking Closer

## By Education Level / Undergraduate Class Year

	2016			2018			2020			2016-2020	
	Enrolled	Voted	Rate (%)	Enrolled	Voted	Rate (%)	Enrolled	Voted	Rate (%)	Change (p.p)	
<b>EDUCATION LEVEL</b>											
<b>Undergraduate</b>	21,177	11,534	54	22,247	9,027	41	21,194	13,171	62	↑	8
<b>Graduate</b>	5,416	3,284	61	5,407	2,836	52	5,971	3,971	67	↑	6
<b>Class Unknown</b>	1,607	783	49	1,348	595	44	1,308	891	68	↑	19
<b>CLASS YEAR</b>											
<b>First Year</b>	6,074	52	3,151	5,151	36	1,880	4,639	54	2,522	↑	2
<b>Second Year</b>	4,957	51	2,547	4,938	38	1,860	4,895	60	2,937	↑	9
<b>Upper Level</b>	10,264	58	5,903	12,060	44	5,261	11,633	66	7,699	↑	9
<b>ENROLLMENT STATUS</b>											
<b>Full-time</b>	24,103	13,298	55	25,291	10,571	42	24,818	15,572	63	↑	8
<b>Part-time</b>	4,097	2,490	61	3,711	2,031	55	3,655	2,486	68	↑	7

**These are estimated voting rates by Education Level (undergraduate/graduate), Class Year, and Enrollment Status (full-time/part-time), and the numbers we used to calculate these rates.**

If you notice missing data in this page, it could mean any of the following for your institution: (i) does not report this data; (ii) did not provide this data in past years; (iii) does not separately submit data for one or more of the demographic groups, or (iv) the data is reported for 10 or fewer students.

## By Field of Study

FIELDS	2016			2018			2020			2016-2020	
	Enrolled	Voted	Rate	Enrolled	Voted	Rate	Enrolled	Voted	Rate	Change (p.p)	
Area, Ethnic, Cultural, and Gender Studies	141	87	62	144	71	49	88	61	69	↑	8
Biological and Biomedical Sciences	622	344	55	1,006	457	45	1,438	878	61	↑	6
Business, Management, and Marketing	5,698	2,819	49	6,158	2,252	37	5,820	3,504	60	↑	11
Communication and Journalism	1,021	604	59	946	443	47	705	454	64	↑	5
Computer and Information Sciences	661	259	39	712	233	33	511	260	51	↑	12
Education	1,110	751	68	1,042	554	53	1,058	732	69	↑	2
Engineering and Engineering Technologies	2,180	1,133	52	2,176	823	38	2,345	1,397	60	↑	8

**These are estimated voting rates by field of study, and the numbers we used to calculate the field of study rates.** For an explanation of CIP codes, please see our FAQ.\* There are roughly 8,000 fields of study among U.S. colleges and universities, so we provide rates for condensed categories.

\*<https://tufts.app.box.com/v/idhe-nslve-report-faq>

# By Field of Study

FIELDS	2016			2018			2020			2016-2020	
	Enrolled	Voted	Rate	Enrolled	Voted	Rate	Enrolled	Voted	Rate	Change (p.p)	
English Language and Literature	742	509	69	887	513	58	849	544	64	↓	-5
Foreign Languages, Literatures, and Lingui..	292	178	61	272	147	54	234	156	67	↑	6
Health Professions	5,698	3,413	60	5,772	2,480	43	6,134	4,011	65	↑	5
History	154	104	68	186	104	56	162	117	72	↑	5
Legal Professions and Studies	703	454	65	733	419	57	666	437	66	↑	1
Liberal Arts and Sciences, and Humanities	1,053	563	53	1,164	489	42	1,779	1,181	66	↑	13
Mathematics and Statistics	358	103	29	359	86	24	264	119	45	↑	16
Multi/Interdisciplinary Studies	523	382	73	494	300	61	302	225	75	↑	1
Natural Resources and Conservation	171	111	65	165	93	56	137	110	80	↑	15
Parks, Recreation, Leisure, and Fitness Stu..	1,928	1,049	54	1,779	668	38	1,421	909	64	↑	10
Philosophy and Religious Studies	81	52	64	78	45	58	73	48	66	↑	2
Physical Sciences	399	184	46	394	159	40	398	244	61	↑	15
Psychology	875	483	55	918	423	46	923	589	64	↑	9

## By Field of Study

FIELDS	2016			2018			2020			2016-2020	
	Enrolled	Voted	Rate	Enrolled	Voted	Rate	Enrolled	Voted	Rate	Change (p.p)	
Public Administration and Social Service Professions	331	259	78	361	262	73	351	275	78	↑	0
Social Sciences	1,157	618	53	1,205	569	47	1,029	629	61	↑	8
Visual and Performing Arts	1,181	721	61	1,248	647	52	1,132	777	69	↑	8
Unknown	878	494	56	597	304	51	484	350	72	↑	16



# About This Report

## Thank you for participating in the National Study of Learning, Voting, and Engagement.

Since NSLVE's launch in 2013, nearly 1,200 colleges and universities have signed up to receive their voting rates for the 2012, 2014, 2016, 2018, and 2020 federal elections.

Along with others, your institution's participation in this study has allowed us to build a robust database of over 50 million college student records, about 10 million for each election year, that serve as a foundation for innovative research on college student political learning and engagement in democracy.

NSLVE is a signature initiative of the Institute for Democracy and Higher Education (IDHE) at Tufts University's Jonathan M. Tisch College of Civic Life. The mission of IDHE is to shift college and university priorities and culture to advance political learning, agency, and equity. We achieve our mission through research, resource development, technical assistance, and advocacy.

### About the Data

The voter registration and voting rates in this report reflect the percentage of your institution's students who were eligible to vote and who actually voted in the 2016, 2018, and 2020 elections.

These results are based on enrollment records your institution submitted to the National Student Clearinghouse (NSC) and publicly available voting files collected by L2 Political.

Enrollment lists are adjusted by deducting students under age 18 (at the time of the election), people identified as non-degree seeking and those identified by campuses as "nonresident aliens" (NRAs) (the federal government's category for mostly international students). Unfortunately, not all campuses report NRAs to NSC. For those campuses, we use IPEDS to calculate the number of NRA students on each campus and adjust NSC enrollment numbers to estimate the number of students to remove. We also quality check NRA removals by verifying that there is little to no discrepancy between the number of international students reported by the campus to IPEDS and to NSC. We cannot adjust subgroup analyses absent identification of NRAs verified by the process above. We welcome closer partnerships with individual colleges and universities to provide more accurate rates. For more on the data and the matching process, see our FAQ on Campus Reports.

University Of Iowa

Thank you for the work you do to improve your students' political learning and engagement. We hope that you find your NSLVE report useful. For up-to-date news on NSLVE data, resources, and to sign up for our newsletter visit: <https://idhe.tufts.edu>.

References: IDHE encourages report recipients to share this report as broadly as possible, including posting it on the college or university's website. When doing so, please use the following citation: Institute for Democracy & Higher Education: National Study of Learning, Voting and Engagement. (2021). 2016, 2018, and 2020 report for \_\_\_\_\_ [name of institution]. Medford, MA.



Barnum Hall  
163 Packard Ave.  
Medford, MA 02155

tischcollege@tufts.edu  
617.627.3453



Institute for Democracy & Higher Education:  
National Study of Learning, Voting, and Engagement  
Barnum Hall, Medford, MA 02155

Follow Us on Twitter: @TuftsIDHE  
NSLVE@tufts.edu  
617.627.0620